



# ASTUMBO ELEMENTARY SCHOOL BUTTERFLY CHRONICLE

**FEBRUARY 2021**

Phone number: 671-635-4363

email: [astumboes@gdoe.net](mailto:astumboes@gdoe.net)



[astumboelementary](https://www.instagram.com/astumboelementary)



[Astumbo Elementary School](https://www.facebook.com/AstumboElementarySchool)



[www.astumboelementary.weebly.com](http://www.astumboelementary.weebly.com)



## *A Message From Our Principal*

Hafa Adai Parents / Guardians,

Thank you to our Butterfly families for a smooth first week of Face to Face Model of Learning instruction. As we address one of the recommendations from the WASC committee during their initial school visit last SY 2018-2019 and, after lengthy discussions and work sessions with our faculty and staff, we would like to announce our new School Learning Outcomes. Our new SLO's (School Learning Outcomes) will be taught by our teachers and our staff to our students. These new SLO's are specific to what students will know, be able to do or demonstrate.

### **Astumbo Elementary School Learning Outcomes**

- A - Academic Achievers
- T - Technology Literate Team Builders
- E - Empathetic Citizens
- S - Socially Responsible Citizens

In addition, Astumbo Elementary is preparing for a full Self- Study Visit for SY 2021-2022. More details will be forthcoming. Just as a reminder, school gates open at 7:15am for students. To ensure students' safety, exit gates will be closed after the bell rings at 8:30am, and will remain closed until the end of the school day. Visitors will be entertained from 8:30am to 2:00pm. Only two (2) visitors allowed in the main office lobby. All visitors or Parent/Guardian meetings will be by appointment only to address any concerns or to request for school documents/withdrawals/registration or unless arranged by the school administrator or office staff.

During this school year, your continued cooperation in adhering with the drop-off and dismissal procedures and the need to follow certain health and safety guidelines is greatly appreciated. Please use your car-rider placards, as this helps us in the efficiency of the traffic flow during car -rider pick up.

In honor of National School Counselors Week (February 1-5), we want to take this opportunity to thank Mrs. Katrina Comia. We appreciate all that you do for our students and the support you provide for our teachers, staff, and our parents. Let's take the time to thank her by greeting her, sending an email, or simply writing a note to her. Again, Happy School Counselor's Week Mrs. Comia! WE APPRECIATE YOU!

February is known as the month of "Love" however, with regards to parenting, What is Tough Love? Raising children with Tough Love is just that: TOUGH. Parents/Guardians, surely you love your children with every inch of your soul, doing your utmost to provide for their need of food, clothing, shelter, personal attention, guidance, direction, appropriate discipline when needed, a good education, and more.

Therefore, you have only one chance in this life to raise your children to become honorable and respectable adults, where they will then pass it onto the next generation and the next. You must "let your yes mean yes, and your no mean no". So, as I quote, Elbert Hubbard, "*Where parents do too much for their children, the children will not do much for themselves.*" Let's practice tough love!

Have a wonderful month of February filled with love, good health, and kindness. Have a wonderful Valentine's Day everyone!

*Mrs. Parel-Fontbuena*

# SAFETY REMINDERS

We are committed to the continuity of learning for our students therefore protecting the health and safety of our students and families, and employees is a priority. With that said, we need to make necessary adjustments on how we will educate our students and the need to follow certain health and safety guidelines.

## Student Arrival

School Gates open at 7:15am for students. Students are not allowed on campus before 7:15am. All students are required to wear a face mask/covering upon entry into the school campus. Temperature checks upon arrival and adherence of physical distancing will take place on campus. We would like to inform our parents/guardians that Astumbo Elementary is enforcing a **"DROP and GO"** morning Drop Off procedure. Please drop your child/children at the drop off (Car Riders) area located in front of the main office. Once your child/children have passed the temperature check and health screening, a staff member will inform you that you may leave.

## Office Hours/Meetings/Request for School Documents

Main Office Hours will be from 8:30am to 2:00pm. Only two (2) visitors are allowed in the main office lobby. Please ring the doorbell for assistance. All visitor(s) or Parent/Guardian meetings will be by appointment only to address any concerns or to request for school documents/withdrawals/registration or unless arranged by the school administrator or office staff.

## Visitors

Please be aware that as per GDOE policy, all visitors are required to sign in at the main office. Please note that "Any person found on school campus without permission from the principal shall be guilty of a misdemeanor". Government Code of Guam, Section 11503. This is to ensure protection and safety of our faculty/staff and students on campus.

Visitors will be entertained from 8:30am to 2:00pm. Visitors will not be entertained during student arrivals and dismissals to avoid congestion. All visitors will adhere to the following guidelines:

- \* All Visitors will be required to wear a face mask/ covering upon entry into the school campus.
- \* All visitors are required to check into the main gate with the Gate keeper.
- \* Gate keeper will conduct the COVID -19 Symptom Screening and a required temperature check before proceeding into the school campus. Furthermore, no entry will be granted if temperature is 100 degrees Fahrenheit or above, in accordance with DPHSS guidelines.
- \* Once on campus, all visitor(s) will adhere to the maximum capacity of each area and CDC physical/social distance guidelines of 6 feet apart. Also, follow the markings placed on the floorings.

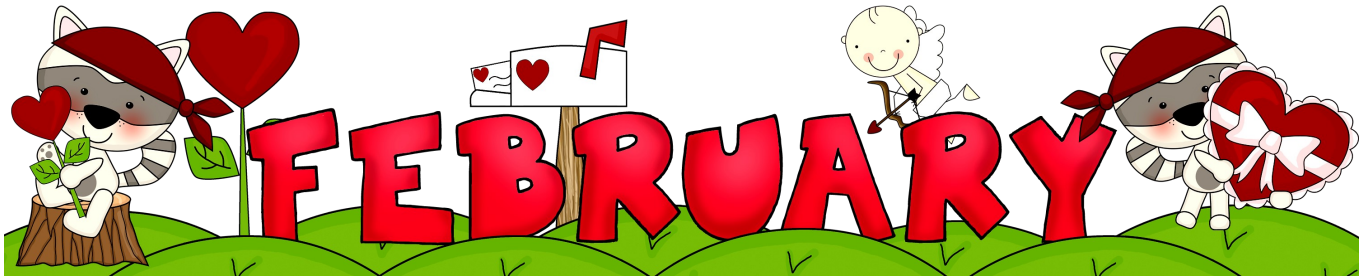
## Front and Back Gate Walkers

Front and back gate opens at 7:15am and closes at 8:15am. Student(s) are to wait at the front/back walker gate until a staff opens the gate. Student(s) are to adhere to 6 feet social/physical distancing by the walkers gates. Floor markings of 6 feet distancing requirement will need to be followed. Students are to wear a mask covering once they enter the school campus. They will also go through temperature check and health screening.

## Dismissal

Please take note that dismissal is at 2:43pm, once all the buses leave the campus, to minimize the exposure on campus, parents will not be allowed to enter the campus to pick up their children. We ask that you wait by the front/back gate as your child is escorted to the designated gate. Please keep the 6ft physical distancing and to wear your masks. On rainy days, please be prepared to bring an umbrella or raincoat when you pick up your child/children. There may be a delay in releasing your children as we wait for the rain to subside.

For walkers and student pick-up, both the main walker's entrance gate and the main gate will close at 2:00pm, and will re-open at 2:43pm. For the safety of everyone, your continued support and cooperation in adhering with the drop-off and dismissal procedures is greatly appreciated. We also ask for your patience, as we think of the safety of everyone.



SUNDAY	MONDAY	TUESDAY	WEDNESDAY	THURSDAY	FRIDAY	SATURDAY
	1 ONLINE	2 ONLINE	3 Face to Face Cohort A	4 Face to Face Cohort B	5 Student Intervention Day Food Distribution & Hard Copy Packet Distribution/ (9AM-12PM)	6
7	8 ONLINE	9 ONLINE	10 Face to Face Cohort A	11 Face to Face Cohort B	12 Student Intervention Day Food Distribution & Hard Copy Packet Distribution/ (9AM-12PM)	13
14 Valentine's Day	15 ONLINE	16 ONLINE	17 Face to Face Cohort A	18 Face to Face Cohort B	19 Student Intervention Day Food Distribution & Hard Copy Packet Distribution/ (9AM-12PM)	20
21/28	22 ONLINE	23 ONLINE	24 Face to Face Cohort A	25 Face to Face Cohort B	26 Student Intervention Day Food Distribution & Hard Copy Packet Distribution/ (9AM-12PM)	27

## Checklist Before Heading to School for Face to Face Learning



- ☑ 1. Temperature Check  
Do a temperature check and visual symptoms screening.

### ☑ 2. Face Mask

Please ensure your child has a face mask before leaving the house.

\*\*Mandatory face mask\*\*

\*\*Face shield optional\*\*



### ☑ 3. Hand Sanitizer

If possible, please label and have your child carry their personal hand sanitizer for



## Exclusion Criteria

- Temperature of 100.4 or higher
- Cough
- Vomiting/ Diarrhea
- New rash
- Identified by Department of Public Health & Social Services (DPHSS) contact tracing
- Off-island travel within the last 14 days



## Elementary Face to Face Learning Schedule

Monday/Tuesday - Online

Wednesday/Thursday - Face to Face

Wednesday - Cohort A

Thursday - Cohort B

Friday - Student Intervention and Hard Copy

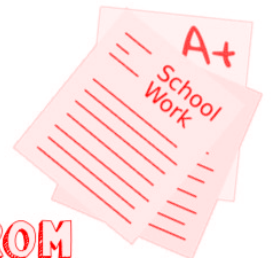
## IMPORTANT

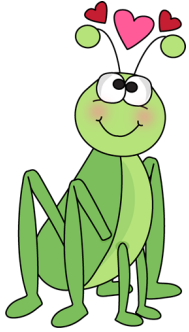
- Please communicate with your child's teachers regularly.
- Please inform your child's teacher if any personal info has changed (telephone number, home address, etc.)

## NEW 3RD QUARTER K-5 HARD COPY DISTRIBUTION SCHEDULE

NOW EVERY FRIDAY FROM 9AM-12PM

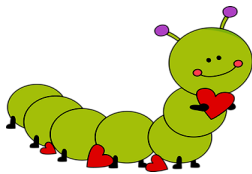
NO DISTRIBUTION FROM TUESDAY-THURSDAY





# HEAD START PROGRAM

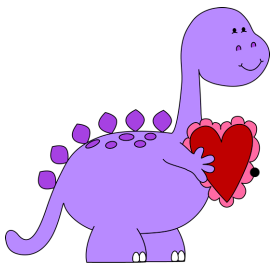
On February 1st and February 2nd, Head Start will be going on a Virtual Field Trip to Hamamoto Tropical Fruit World in collaboration with our Gardening Study. Also beginning February 1st, we will be introducing our Insect Study for the month.



# Colorful Kindergarten



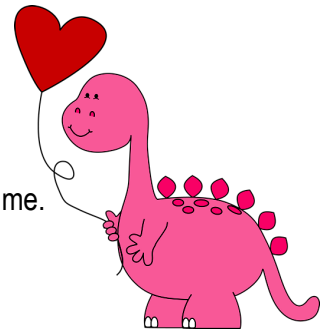
1. Please communicate with your child's teacher regularly.
2. Please inform your child's teacher on any changes to personal information. (Home Address, phone number etc.)
3. Please ensure you have your child's name, grade and teacher's name showing on your windshield to assist with hard copy distribution.
4. Review all kindergarten skills daily: Letter writing, letter sounds, letter recognition, rote counting, number recognition and number quantity.
5. Please visit our kindergarten website for skills that we are currently focusing on. [ateskindergarten.weebly.com](http://ateskindergarten.weebly.com)
6. January 29th, was our 100th day of school, Yay!!! On behalf of our kindergarten team, we would like to Thank you for all that you are doing to support your child's education!



# Fantastic First Grade

Tutoring:

- Please ensure that your child comes to their scheduled tutoring session on time.
  - Your child will be escorted to their classroom by school staff.
  - Please pick up your child on time.
- Patiently wait in your vehicle and a staff member will escort your child to your vehicle.



# SUPER SECOND GRADE

Hello Students!  
Your 2nd grade teachers are available for in-person tutoring every Friday. Ask your parents to contact your homeroom teacher to make arrangements.



Mr. J. Hoya.  
[jrhoya@gdoe.net](mailto:jrhoya@gdoe.net)  
300-6956

Ms. P. Quindara  
[piquindara@gdoe.net](mailto:piquindara@gdoe.net)  
300-6957

Mrs. J. Santos  
[jddsantos@gdoe.net](mailto:jddsantos@gdoe.net)  
300-6958

Ms. D. Bansil  
[dcbansil@gdoe.net](mailto:dcbansil@gdoe.net)  
635-4363



# TERRIFIC THIRD GRADE

**READING:**  
CCSS.ELA-LITERACY.RI.3.1 Ask and answer questions to demonstrate understanding of a text, referring explicitly to the text as the basis for the answers.

CCSS.ELA-LITERACY.RL.3.1 Ask and answer questions to demonstrate understanding of a text, referring explicitly to the text as the basis for the answers.

CCSS.ELA-LITERACY.RI/3.2 Determine the main idea of a text; recount the key details and explain how they support the main idea.

**LANGUAGE:**  
CCSS.ELA-LITERACY.L.3.1. A, C, D, E, F, H Demonstrate command of the conventions of standard English grammar and usage when writing or speaking:

A. Explain the function of nouns, pronouns, verbs, adjectives, and adverbs in general and their functions in particular sentences.

(**VERBS**)

D. Form and use regular and irregular verbs.

E. Form and use the simple (e.g., I walked; I walk; I will walk) verb tenses.

F. Ensure subject-verb and pronoun-antecedent agreement.

H. Use coordinating and subordinating conjunctions.

**WRITING:**  
CCSS.ELA-LITERACY.W.3.3 Write narratives to develop real or imagined experiences or events using effective technique, descriptive details, and clear event sequences.

**MATH:**  
CC7S.MATH.CONTENT.3.OA.D.7 Fluently multiply and divide within 100, using strategies such as the relationship between multiplication and division (e.g., knowing that  $8 \times 5 = 40$ , one knows  $40 \div 5 = 8$ ) or properties of operations. By the end of Grade 3, know from memory all products of two one-digit numbers.

CCSS.MATH.CONTENT.3.OA.D.8 Solve two-step word problems using the four operations. Represent these problems using equations with a letter standing for the unknown quantity. Assess the reasonableness of answers using mental computation and estimation strategies including rounding. (ADDING and SUBTRACTING).

CCSS.MATH.CONTENT.3.OA.A.1 Interpret products of whole numbers, e.g., interpret  $5 \times 7$  as the total number of objects in 5 groups of 7 objects each. For example, describe a context in which a total number of objects can be expressed as  $5 \times 7$

**SOCIAL STUDIES:** 3.1.1 Describe and explain the significance of traditional food, customs, sports and games, and music of the place they came from with the help of family members or other adults.



## FRIENDLY REMINDER:

\*Please encourage your child to continue studying the multiplication facts 0-12.

\*\*Help your child improve their reading skills by encouraging them to read daily.

\*\*\*Parents, please contact your child's teacher for questions/concerns regarding your child's assignments or if you want assistance for your child. Thank you.

Mrs. Burk (CIO) - [bsburk@gdoe.net](mailto:bsburk@gdoe.net)

Miss Flores (CIO2) - [miflores@gdoe.net](mailto:miflores@gdoe.net)

Miss Teria/Mrs. Lumanog-Ricalde - [bdteria@gdoe.net](mailto:bdteria@gdoe.net) / [nglumanog@gdoe.net](mailto:nglumanog@gdoe.net)

Miss Villanueva (CIO4) - [prvillanueva@gdoe.net](mailto:prvillanueva@gdoe.net)



# FABULOUS FOURTH GRADE

## Mark your calendars!

Social Fun Friday → February 12, 2021 @8:30AM  
\*Be on the lookout on ClassDojo, email, and/or hard copy packet for the Zoom information.

3rd Quarter Talent Show → March 12, 2021

## 3<sup>rd</sup> Quarter Skills

### Science

**4-LS-1** Explain how populations live in a variety of habitats and how change in those habitats affect the organisms living there.

### Guam History

**4.2.1** Discuss the impact of the Japanese occupation on Guam.

### Spelling

**4.L.4b** Use common, grade-appropriate Greek and Latin affixes and roots as clues to the meaning of a word.

### Writing

**4.W.4** Produce clear and coherent writing in which the development and organization are appropriate to task, purpose, and audience.

### Language

**4.L.1A** Use relative adverbs (where, when, why) in a sentence correctly.

**4.L.1B** Form and use progressive verb tenses correctly.

### Reading

**4.RI.2** Determine the main idea of a text and explain how it is supported by key details; summarize the text.

### Mathematics

**4.NBT.5** Multiply a whole number of up to four digits by a one-digit whole number, and multiply two two-digit numbers.

## Meeting Days for Face to Face Students

Cohort A	Cohort B
February 3, 10, 17, 24 March 3, 10	February 4, 11, 18, 25 March 4, 11

## Meeting Days for Online Students

Cohort A	Cohort B
February 1, 8, 15, 22, 26 March 8	February 2, 9, 16, 23 March 2, 9

**Please take note of our Hard Copy Distribution Schedule. All assignments must be COMPLETED and SUBMITTED by March 12, 2021. Packets will NOT be accepted after this date.**

Packets to be picked up	Day 5	Day 6	Day 7	Day 8 & 9	Day 10	Drop off any missing packets
PICK UP/DROP OFF dates	2/5/2021	2/12/2021	2/19/2021	2/26/2021	3/5/2021	3/12/2021

# PHENOMENAL FIFTH GRADE



PSST SY20-21	Math	Reading	ELA	Social Studies	Science
1 <sup>st</sup> Quarter					
2 <sup>nd</sup> Quarter		5.RI.3			
3 <sup>rd</sup> Quarter	5.NF.1		5.L.2 a,b and c	5.1.1	Topic: Matter
4 <sup>th</sup> Quarter		5.RI.5	5.L.2 d and e	5.2.8	

**Math: 5.NF.1** – Operations with fractions, specifically adding and subtracting fractions with unlike denominators.

**Reading: 5.RI.3** – Compare and contrast two or more characters, settings, or events in a story or drama, drawing on specific details in the text (how characters interact).

**ELA: 5.L.2 (a,b,and c)** – Using commas in a sequence, in introductory elements and clauses.

**Social Studies: 5.1.1** – Explain the relationship of the early English settlers with the native American Indians of North America.

**Science:** Properties of Matter

In addition we would like to encourage our students to master their multiplication facts. A strong knowledge of multiplication and division will surely boost a student's confidence in tackling a complex concept such as fractions.

Please spend 15 minutes daily reading.

Reminder on the importance of completing your assignments. The assignments may look overwhelming but if you can schedule working on them throughout the week so that by Friday it is ready for submission.

**Parent please contact your child's teacher to should you want assistance for your child.**

Dr. J. Limes, E-103 – [jbimes@gdoe.net](mailto:jbimes@gdoe.net)

Mr. P. Cruz, E-104 – [pjacruz@gdoe.net](mailto:pjacruz@gdoe.net)

Mrs. F. Tibudan, E-105 – [ftibudan@gdoe.net](mailto:ftibudan@gdoe.net)

Mrs. J. Benavente, E-106 – [jqbenavente@gdoe.net](mailto:jqbenavente@gdoe.net)

# CHAMORU PROGRAM

## Grupun Nengkanno' – Food Group

### Inetnon Ággon – Starches/Grains

Batátas – *potato*

Udon - *noodles*

Kamuti – *sweet potato*

Chotda – *green banana*

Dágu – *yam*

Kao ya-mu batátas? Hunggan pat Áhe!

Gof mángge' i tinala' kátne.

Mahetok i kátne guaka.

Mañaña i udon.

Ya-hu dágu.

Ti ya-hu kátne babui.

### Inetnon Totche – Proteins/Meats

Tinala' Kátne – *dried meat*

Eskabeche – *Fried fish cooked w/vegetables*

Babui/kátne babui - *pig/pork*

Pábu/Hinetnon – *turkey/baked*

Guaka/kátne guaka - *beef*

Do you like potatoes? Yes or No!

The dried meat taste so good.

The beef is hard.

The noodle is soft.

I like yam.

I do not like pork.



# Special Education

Hello Parents/Guardians,

Please ensure that your child comes on time for their scheduled tutoring session. Upon arrival on campus, they will get their temperature checked and then escorted to the classroom. Kindly pick up your child on time. Your child will be escorted to your vehicle. Thank you for your continued support.

Sincerely,  
Ms. Cruz & Dr. Manalo



## ESL PROGRAM

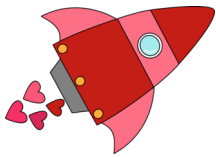


The ESL Team is offering Friday tutorials and consultations for ESL students in all Models of Learning. **Parents** are encouraged to get in touch with their child's ESL teacher to set up a schedule. The Team commends parents and students who have already set up a schedule with their ESL Teachers. To contact your child's teacher, please call AsTumbo Elementary School at 635-4363, leave a message and your contact information. The ESL team will return your call.

1<sup>st</sup> & 5<sup>th</sup> Grade - Mrs. Acosta

2<sup>nd</sup> & 3<sup>rd</sup> Grade - Mrs. Andres

4<sup>th</sup> Grade - Mrs. Felipe



## GATE

The Gifted and Talented Education (GATE) program will accept pre-screening applications for the GATE Pre-Kindergarten program between February 8, 2021 and April 30, 2021.

Parents and legal guardians will need to include a copy of the child's birth certificate or passport when submitting the pre-screening application. Applications for the GATE Pre-Kindergarten program can be picked up at the AsTumbo Elementary School main office.

The GATE Pre-Kindergarten program offers activities that cater to the physical, social, emotional, and intellectual needs of our students. Students enrolled in this program will participate in an accelerated curriculum that fosters eager and effective learners.

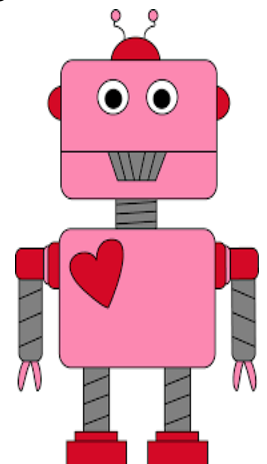
Eligibility requirements for the pre-screening application include the following:

- Children must be four years of age by July 31, 2021.
- Children are able to interact with others without the presence of a parent or legal guardian.
- Children must complete three tests: a visual-motor integration test, a vocabulary test, and a visual-closure test.
- Children must score at least 130 on any one of these tests, or a total score of 350, in order to qualify for the GATE Pre-Kindergarten program.

Testing will be conducted between March 2, 2021 and May 7, 2021.

If selected, parents must provide transportation to and from the respective participating school site.

**For more information, call the Division of Curriculum & Instruction at 300-3687 or at 300-1247.**





# Counselor Connection

Katrina Comia, M.Ed.  
School Counselor

Contact Me

Phone: 635-4363

Email: klcomia@gdoe.net

Visit my website:

<https://mrscomiacounselor.weebly.com>

## Monday- We're all in for all students!

- Teacher & Staff Appreciation token from Mrs. Comia (Located in teachers box/lounge)

## Tuesday- We're A Team!

- Strike a pose #Allinforallstudents (staff/faculty photo collage)

## Wed & Thur- Color Me Giveaways for on campus students!

- Motivational quote coloring activity for student.

## Friday- Student set for Bright Future! Online Exploration

- Continue adventure with "Paws" to explore the world of work.

## Parents/ Guardians I am available to assist with:

- Exploring ways to help your child succeed.
- Referrals for community resources if needed.
- Provide information to help understand your child needs.



# LIBRARY

February 8 – 12, 2021 is the School Library Conference. There will be no library classes during this week.

Online Library Classes Mondays/Tuesdays	
Kindergarten & 1 <sup>st</sup> Grade	1:15 – 1:45
2 <sup>nd</sup> Grade & 3 <sup>rd</sup> Grade	12:30 – 12:55
4 <sup>th</sup> Grade & 5 <sup>th</sup> Grade	12:00 – 12:30

Face To Face Library Classes Wednesdays/Thursdays			
Kindergarten	8:45 – 9:15	3 <sup>rd</sup> Grade	10:30 – 11:00
1 <sup>st</sup> Grade	9:15 – 9:45	4 <sup>th</sup> Grade	11:00 – 11:30
2 <sup>nd</sup> Grade	1:15 – 1:45	5 <sup>th</sup> Grade	12:00 – 12:30

## Third Quarter Library Priority Skills

<b>Reference</b> Dictionary Atlas  <b>Genre</b> Poetry Fairy Tales Folklore Fables	<b>Reference</b> Dictionary Atlas Periodicals  <b>Genre</b> Poetry Fairy Tales Folklore Fables	<b>Reference</b> Dictionary Atlas Periodicals  <b>Genre</b> Poetry Fairy Tales Folklore Fables  <b>Online Research</b> Search Engines Keywords Websites EBSCO	<b>Reference</b> Dictionary Atlas Periodicals  <b>Genre</b> Poetry Fairy Tales Folklore Fables Legends  <b>Online Research</b> Search Engines Keywords Websites EBSCO	<b>Reference</b> Dictionary Atlas Periodicals Thesaurus  <b>Genre</b> Poetry Fairy Tales Folklore Fables Legends  <b>Online Research</b> Search Engines Keywords Websites EBSCO	<b>Reference</b> Dictionary Atlas Periodicals Thesaurus  <b>Genre</b> Poetry Fairy Tales Folklore Fables Legends  <b>Online Research</b> Search Engines Keywords Websites EBSCO
--	---	--	---	--	--