



# ASTUMBO ELEMENTARY SCHOOL BUTTERFLY CHRONICLE

**APRIL 2021**

Phone number: 671-635-4363

email: astumboes@gdoe.net



astumboelementary



AsTumbo Elementary School



www.astumboelementary.weebly.com

## A Message From Our Principal

*April showers bring beautiful May flowers – yes! Spring is in the air and summer is just around the corner!*

*Although summer appears to be peeking through, we have a lot of work to do, as we prepare for the upcoming District Wide Assessment that is slated for April 5 to May 14.*

**Face-to-Face students** will participate in the ACT Aspire Online Assessment as follows:

*Reading – Grades 3-5*

*English – Grades 3-5*

*Math – Grades 3-5*

*Science – Grade 3*

*More information will be forthcoming as the testing days draw nearer. Be looking out for it because we're going to need your support in preparing your child for these test days by getting a good night's sleep, arriving to school on-time, and eating a healthy breakfast to start their day.*

*GDOE has been meeting, planning, and preparing with the schools and the community for School Year 2021-2022. With that said, there will be only two models of learning available for SY 2021-2022, **ONLINE** and **FACE TO FACE (FTF)**. All students who would like to register for the **Online Model of Learning for SY 2021-2022** will need to submit the **ONLINE Selection Form** to the district school in which they are registered. **All students are registered as Face-to-Face students unless they submit an ONLINE SELECTION FORM.***

*Please note that once the Online Selection Option is selected it cannot be changed for the remainder of the semester, except under extenuating circumstances and with the approval of the school administrator.*

*5th grade students will submit their **Online Registration form** to Astumbo Elementary and will be forwarded to their feeder school that they will be attending for SY 21-22. **Forms are due by Friday, April 9, 2021.***

*Friendly reminder, there will be no classes on the week of March 29 – April 2<sup>nd</sup> due to the scheduled Easter break; classes resume on Tuesday, April 6<sup>th</sup> please mark your calendar!*

*In addition, please be reminded that there is **NO** food distribution on March 26, 2021. The Grab and Go Food Distribution will resume on Thursday, April 1, 2021 from 9:00am to 11:00am.*

*Mrs. Parel – Gontbuena*

# SAFETY REMINDERS

We are committed to the continuity of learning for our students therefore protecting the health and safety of our students and families, and employees is a priority. With that said, we need to make necessary adjustments on how we will educate our students and the need to follow certain health and safety guidelines.

## Student Arrival

School Gates open at 7:15am for students. Students are not allowed on campus before 7:15am. All students are required to wear a face mask/covering upon entry into the school campus. Temperature checks upon arrival and adherence of physical distancing will take place on campus. We would like to inform our parents/guardians that Astumbo Elementary is enforcing a **“DROP and GO”** morning Drop Off procedure. Please drop your child/children at the drop off (Car Riders) area located in front of the main office. Once your child/children have passed the temperature check and health screening, a staff member will inform you that you may leave.

## Office Hours/Meetings/Request for School Documents

Main Office Hours will be from 8:30am to 2:00pm. Only two (2) visitors are allowed in the main office lobby. Please ring the doorbell for assistance. All visitor(s) or Parent/Guardian meetings will be by appointment only to address any concerns or to request for school documents/withdrawals/registration or unless arranged by the school administrator or office staff.

## Visitors

Please be aware that as per GDOE policy, all visitors are required to sign in at the main office. Please note that “Any person found on school campus without permission from the principal shall be guilty of a misdemeanor”. Government Code of Guam, Section 11503. This is to ensure protection and safety of our faculty/staff and students on campus.

Visitors will be entertained from 8:30am to 2:00pm. Visitors will not be entertained during student arrivals and dismissals to avoid congestion. All visitors will adhere to the following guidelines:

- \* All Visitors will be required to wear a face mask/ covering upon entry into the school campus.
- \* All visitors are required to check into the main gate with the Gate keeper.
- \* Gate keeper will conduct the COVID -19 Symptom Screening and a required temperature check before proceeding into the school campus. Furthermore, no entry will be granted if temperature is 100 degrees Fahrenheit or above, in accordance with DPHSS guidelines.
- \* Once on campus, all visitor(s) will adhere to the maximum capacity of each area and CDC physical/social distance guidelines of 6 feet apart. Also, follow the markings placed on the floorings.

## Front and Back Gate Walkers

Front and back gate opens at 7:15am and closes at 8:15am. Student(s) are to wait at the front/back walker gate until a staff opens the gate. Student(s) are to adhere to 6 feet social/physical distancing by the walkers gates. Floor markings of 6 feet distancing requirement will need to be followed. Students are to wear a mask covering once they enter the school campus. They will also go through temperature check and health screening.

## Dismissal

Please take note that dismissal is at 2:43pm, once all the buses leave the campus, to minimize the exposure on campus, parents will not be allowed to enter the campus to pick up their children. We ask that you wait by the front/back gate as your child is escorted to the designated gate. Please keep the 6ft physical distancing and to wear your masks. On rainy days, please be prepared to bring an umbrella or raincoat when you pick up your child/children. There may be a delay in releasing your children as we wait for the rain to subside.

For walkers and student pick-up, both the main walker’s entrance gate and the main gate will close at 2:00pm, and will re-open at 2:43pm. For the safety of everyone, your continued support and cooperation in adhering with the drop-off and dismissal procedures is greatly appreciated. We also ask for your patience, as we think of the safety of everyone.

# APRIL



SUNDAY	MONDAY	TUESDAY	WEDNESDAY	THURSDAY	FRIDAY	SATURDAY
				1 Food Distribution Resumes	2	3
SPRING BREAK -----> SPRING BREAK -----> SPRING BREAK ----->						
4	5 Flexible Make-up Day NO CLASSES!	6 Classes Resume <b>ONLINE</b> Community Learning Center 3:30PM-7:00PM	7 Face to Face Cohort A	8 Face to Face Cohort B	9 Student Intervention Day 4th Quarter Begins Food Distribution & Hard Copy Packet Distribution (9AM-12PM) Community Learning Center 3:30 PM-7:00PM	10
11	12 <b>ONLINE</b> Community Learning Center 3:30PM-7:00PM	13 <b>ONLINE</b> Community Learning Center 3:30PM-7:00PM	14 Face to Face Cohort A	15 Face to Face Cohort B	16 Student Intervention Day Food Distribution & Hard Copy Packet Distribution (9AM-12PM) Community Learning Center 3:30 PM-7:00PM	17
18	19 <b>ONLINE</b> Community Learning Center 3:30PM-7:00PM	20 <b>ONLINE</b> Community Learning Center 3:30PM-7:00PM	21 Face to Face Cohort A	22 Face to Face Cohort B	23 Student Intervention Day Food Distribution & Hard Copy Packet Distribution (9AM-12PM) Community Learning Center 3:30 PM-7:00PM	24
25	26 <b>ONLINE</b> Community Learning Center 3:30PM-7:00PM	27 <b>ONLINE</b> Community Learning Center 3:30PM-7:00PM	28 Face to Face Cohort A	29 Face to Face Cohort B	30 Student Intervention Day Food Distribution & Hard Copy Packet Distribution (9AM-12PM) Community Learning Center 3:30 PM-7:00PM	

## Checklist Before Heading to School for Face to Face Learning



- 1. Temperature Check  
Do a temperature check and visual symptoms screening.

### 2. Face Mask

Please ensure your child has a face mask before leaving the house.

- \*\*Mandatory face mask\*\*
- \*\*Face shield optional\*\*



### 3. Hand Sanitizer

If possible, please label and have your child carry their personal hand sanitizer for their use only.

## Exclusion Criteria

- Temperature of 100.4 or higher
- Cough
- Vomiting / Diarrhea
- New rash
- Identified by Department of Public Health & Social Services (DPHSS) contact tracing
- Off-island travel within the last 14 days



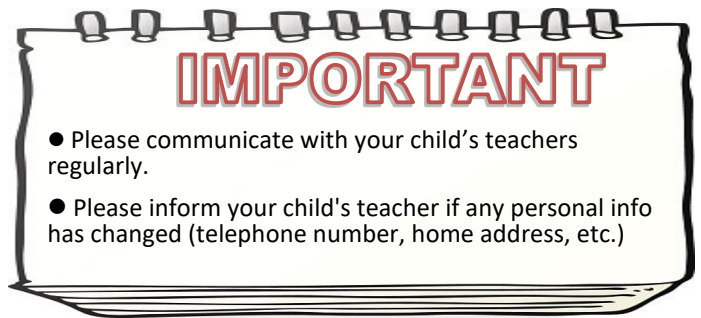
## Elementary Face to Face Learning Schedule

Monday/Tuesday - Online

Wednesday/Thursday - Face to Face

Wednesday - Cohort A  
Thursday - Cohort B

Friday - Student Intervention and Hard Copy



## STUDENT LEARNER OUTCOMES (SLOs)

- A** Academic Achievers
- T** Technology Literate Team Builders
- E** Empathetic Citizens
- S** Socially Responsible Citizens



Study: Getting Ready for Kindergarten  
Family Project: Earth Day: Recycled Project

## HEAD START PROGRAM



## Colorful Kindergarten

\*Practice all kinder skills during Easter break.  
\*We will be doing AIMSWEB testing when we return from break.

## Fantastic First Grade

### 4th Quarter skills/focus:

Reading: Final consonant clusters/ story elements

ELA: Types of Sentences

Math: Telling time

Social Studies: Land and water forms

Science: Solar System



## SUPER SECOND GRADE

### 4th Quarter Skills/Focus

- Reading: Compare and Contrast/ Story Sequencing
- ELA: Adjectives
- Math: Addition/ Subtraction w/ Regrouping
- Science: Water Cycle
- Social Studies: Continents and Oceans/ Map Grids

### Intervention/Tutoring:

- If your child needs additional support, all 2<sup>nd</sup> grade teachers are available for tutoring every Friday. Please schedule a time with your child's respective teacher.

*Happy Easter and always stay safe!*

# TERRIFIC THIRD GRADE



Monday, March 29 – April 2: Spring Break  
Monday, April 5: NO CLASSES (Flexible Make-up Day)  
Tuesday, April 6: Classes resume  
April 5 – May 14: District-Wide Assessment Testing Window  
March 15 – May 24: AIMSWEB Testing Window

## Fourth Quarter Skills:

### READING:

CCSS.ELA-LITERACY.RI.3.1

Ask and answer questions to demonstrate understanding of a text, referring explicitly to the text as the basis for the answers.

CCSS.ELA-LITERACY.RL.3.1

Ask and answer questions to demonstrate understanding of a text, referring explicitly to the text as the basis for the answers.

CCSS.ELA-LITERACY.RI.3.8

Describe the logical connection between particular sentences and paragraphs in a text (e.g., comparison, cause/effect, first/second/third in a sequence).

### LANGUAGE:

CCSS.ELA-LITERACY.L.3.1. A, G,

Demonstrate command of the conventions of standard English grammar and usage when writing or speaking:

A. Explain the function of nouns, pronouns, verbs, adjectives, and adverbs in general and their functions in particular sentences. (ADJECTIVES AND ADVERBS).

G. Form and use comparative and superlative adjectives and adverbs, and choose between them depending on what is to be modified.

### WRITING:

CCSS.ELA-LITERACY.W.3.3.A-D

Write narratives to develop real or imagined experiences or events using effective technique, descriptive details, and clear event sequences:

- A. Establish a situation and introduce a narrator and/or characters; organize an event sequence that unfolds naturally.
- B. Use dialogue and descriptions of actions, thoughts, and feelings to develop experiences and events or show the response of characters to situations.
- C. Use temporal words and phrases to signal event order.
- D. Provide a sense of closure.

### MATH:

CCSS.MATH.CONTENT.3.OA.A.2

Interpret whole-number quotients of whole numbers, e.g., interpret  $56 \div 8$  as the number of objects in each share when 56 objects are partitioned equally into 8 shares, or as a number of shares when 56 objects are partitioned into equal shares of 8 objects each. For example, describe a context in which a number of shares or a number of groups can be expressed as  $56 \div 8$ .

**SOCIAL STUDIES:** 3.2.3 Create and interpret time-lines

**SCIENCE:** Environmental Factors



\*Please encourage your child to continue studying the multiplication and division facts 0-12.

\*\*Help your child improve their reading skills by encouraging them to read daily.

\*\*\*Parents, please contact your child's teacher for questions/concerns regarding your child's assignments or if you want assistance for your child. Thank you.

Mrs. Burk (C101) – [bsburk@gdoe.net](mailto:bsburk@gdoe.net)

Miss Flores (C102) - [miflores@gdoe.net](mailto:miflores@gdoe.net)

Mrs. Lumanog-Ricalde - [nglumanog@gdoe.net](mailto:nglumanog@gdoe.net)

Miss Villanueva (C104) – [prvillanueva@gdoe.net](mailto:prvillanueva@gdoe.net)

# Fabulous Fourth Grade



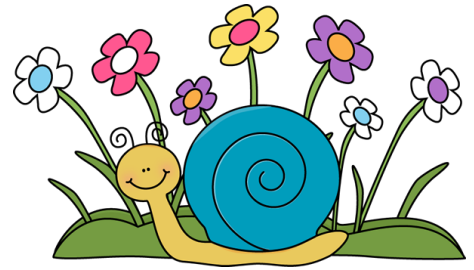
## Hard Copy Packet Pickup and Submission

Hard Copy Packet Pick Up and Submission this month is from 9-12 every Friday. Please pick up and submit your child's assignments. Failure to submit packets on time will result in a failing grade or zero, "0".

## Guam Grabs

Attend weekly sessions with Mrs. Pestanas to grab all you can learn about historical, cultural, social, and geographical topics about the island we call home!

# PHENOMENAL FIFTH GRADE

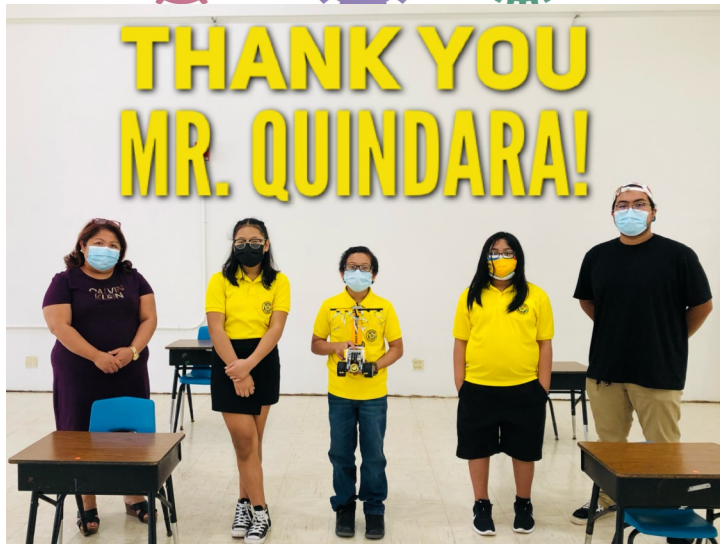


Dear Parents and Students,

The following are just some tips and reminders for the month of April and the fast approaching testing information. Thank you for your time and attention on the following:

1. Attendance- Student attendance is taken based on each student's respective mode of learning (MOL).
2. Hard Copy Reminder-Please pick up new weekly learning packets and return COMPLETED learning packets as scheduled. Any work overdue for over two weeks will not be accepted.
3. Spring Break- There will be no hard copy packet pick up on the week of March 29-April 2.
4. Spring Break Home Study & Practice- please study Math multiplication facts, operations with whole numbers and fraction numbers, reading fluency and comprehension. This is important to prepare for AIMS Web and end of year District assessments.
5. AIMS Web Testing-We will be AIMS Web testing the week of April 6 to 9.
6. District Wide Assessment (DWA)- Please prepare your child for District Wide Assessment. All students in face to face MOL will be taking the DWA this year. Date is forthcoming.
7. Grades Cut Off Period- All grades will be finalized by May 10. Please turn in all assignments on their due dates and any other extended projects or assignments on or before May 10. Be reminded: Any work overdue for over two weeks will not be accepted.
8. Online Registration-Please submit MOL online registration forms by April 6. All students who do not submit an online MOL form will be automatically enrolled in Face to Face classes for next school year 2021-2022.
9. Awards- Astumbo Elementary School leadership and 5<sup>th</sup> grade team of teachers have proposed to offer a 4<sup>th</sup> Quarter AWARD OF PARTICIPATION for 5<sup>th</sup> Grade students. The award criteria includes:
  - Perfect Attendance for 80% of the 4<sup>th</sup> Quarter or up to May 10<sup>th</sup>, 2021.
  - Hard copy students' parents must show up on the designated days to pick up packets during designated hours and submit COMPLETED student work.
  - Online students must be in class on time and throughout the class, with no intermittent absences during class times.
  - Learning packets and other assignments must be submitted by the due date completed diligently with best effort.

# Robotics



We would like to extend our gratitude to Mr. Robert Adrian Quindara for assisting the Astumbo Elementary Robotics Team with their video submission to the TCEA Virtual Robotics Contest. The success of our video submission wouldn't have been possible without his help.

We would also like to thank all of you for voting for our video until the very last day. We appreciate you and your continued support for our team. Thank you!

# CHAMORU PROGRAM

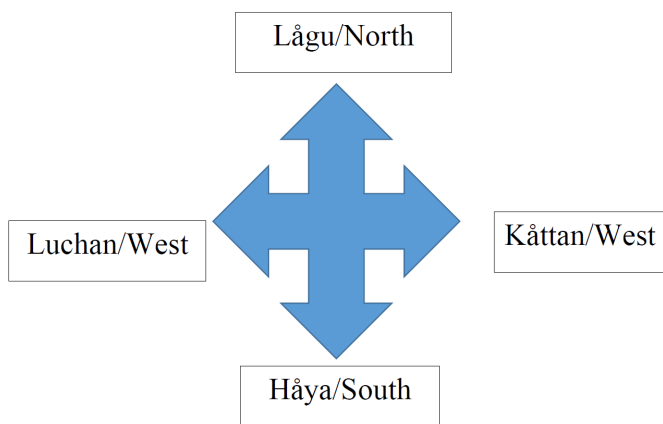


**Silibrasion Gupot Chamoru 2020-2021**  
**Tema: Susteni I Sinafu' yan Hinemlo' I Tano-ta**  
**"Sustaining the Safety and Health of Our People"**

# CHAMORU PROGRAM



## Direksion Siha/Directions



## Kuestion siha/ Questions to Remember

Håfa na direksion este? ➡

Håfa na direksion este? ⬅

Håfa na direksion este? ⬆

Håfa na direksion este? ⬇





# LIBRARY

Online Library Classes Mondays/Tuesdays	
Kindergarten & 1 <sup>st</sup> Grade	1:15 – 1:45
2 <sup>nd</sup> Grade & 3 <sup>rd</sup> Grade	12:30 – 12:55
4 <sup>th</sup> Grade & 5 <sup>th</sup> Grade	12:00 – 12:30

Face To Face Library Classes Wednesdays/Thursdays			
Kindergarten	8:45 – 9:15	3 <sup>rd</sup> Grade	10:30 – 11:00
1 <sup>st</sup> Grade	9:15 – 9:45	4 <sup>th</sup> Grade	11:00 – 11:30
2 <sup>nd</sup> Grade	1:15 – 1:45	5 <sup>th</sup> Grade	12:00 – 12:30

## Fourth Quarter Library Priority Skills

Kindergarten	1 <sup>st</sup> Grade	2 <sup>nd</sup> Grade	3 <sup>rd</sup> Grade	4 <sup>th</sup> Grade	5 <sup>th</sup> Grade
<b>Introduction to Research</b> Keywords Search Pictures  <b>Online Public Access Catalog (OPAC)</b> Keywords Search  <b>Library Week</b> Poetry Biography Read Aloud D.E.A.R. Caldecott & Newberry	<b>Introduction to Research</b> Keywords Search Pictures  <b>Online Public Access Catalog (OPAC)</b> Keywords Search  <b>Library Week</b> Poetry Biography Read Aloud D.E.A.R. Caldecott & Newberry	<b>Research</b> Title, Author, Subject, and Keyword Search  <b>Library Week</b> Poetry Biography Read Aloud D.E.A.R. Caldecott & Newberry	<b>Research</b> Title, Author, Subject, and Keyword Search Note Taking Plagiarism  <b>Library Week</b> Poetry Biography Read Aloud D.E.A.R. Caldecott & Newberry	<b>Research</b> Title, Author, Subject, and Keyword Search Note Taking Plagiarism Outline  <b>Library Week</b> Poetry Biography Read Aloud D.E.A.R. Caldecott & Newberry	<b>Research</b> Title, Author, Subject, and Keyword Search Note Taking Plagiarism Outline Summary  <b>Library Week</b> Poetry Biography Read Aloud D.E.A.R. Caldecott & Newberry



The Gifted and Talented Education (GATE) program will accept pre-screening applications for the GATE Pre-Kindergarten program between February 8, 2021 and April 30, 2021.

Parents and legal guardians will need to include a copy of the child's birth certificate or passport when submitting the pre-screening application. Applications for the GATE Pre-Kindergarten program can be picked up at the AsTumbo Elementary School main office.

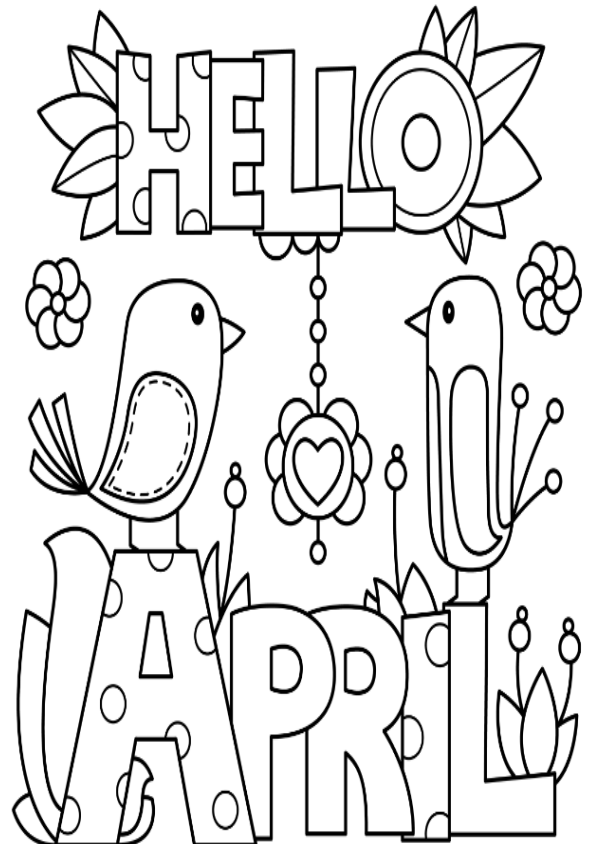
The GATE Pre-Kindergarten program offers activities that cater to the physical, social, emotional, and intellectual needs of our students. Students enrolled in this program will participate in an accelerated curriculum that fosters eager and effective learners.

Eligibility requirements for the pre-screening application include the following:

- Children must be four years of age by July 31, 2021.
- Children are able to interact with others without the presence of a parent or legal guardian.
- Children must complete three tests: a visual-motor integration test, a vocabulary test, and a visual-closure test.
- Children must score at least 130 on any one of these tests, or a total score of 350, in order to qualify for the GATE Pre-Kindergarten program.

Testing will be conducted between March 2, 2021 and May 7, 2021. If selected, parents must provide transportation to and from the respective participating school site.

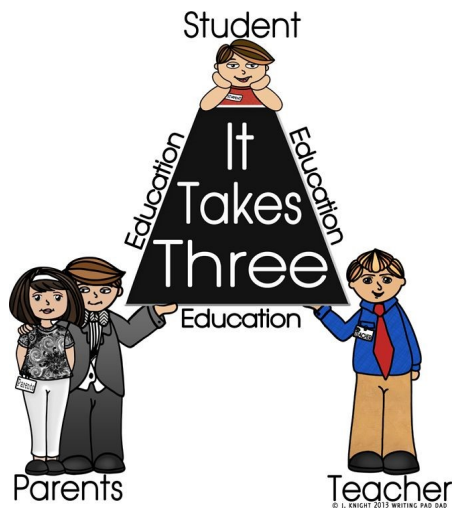
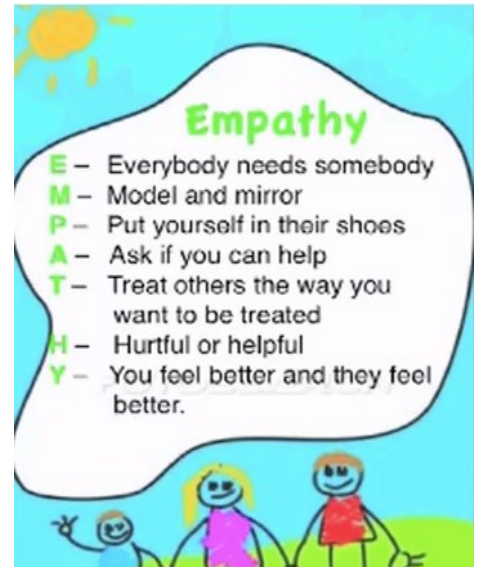
For more information, call the Division of Curriculum & Instruction at 300-3687 or at 300-1247.



# Counselor Connection

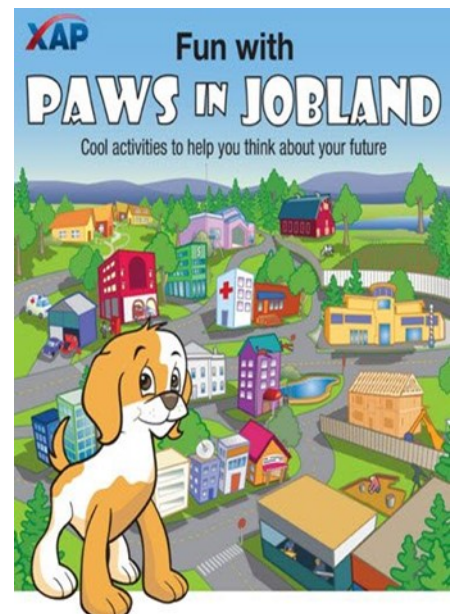
Hi Butterflies! Last month we learned about empathy. As one of our student learning outcomes:

E = is for **E**mpathetic citizens.  
Let's continue practicing our skills !



Butterflies Parents and Guardians we appreciate you for all your support. Continue to stay in touch with your teachers. Should you need to contact me, you may call the school at 635-4363 or email at [klcomia@gdoe.net](mailto:klcomia@gdoe.net)

We had fun meeting Paws and definitely enjoyed our tour in Paws neighborhood. I would like to hear from you butterflies and parents/guardians. Feedback forms will be distributed.



Thank you and Happy Easter!



## Special Education

Have a safe & wonderful Spring Break!  
From Dr. Manalo & Ms. Cruz

# ESL PROGRAM

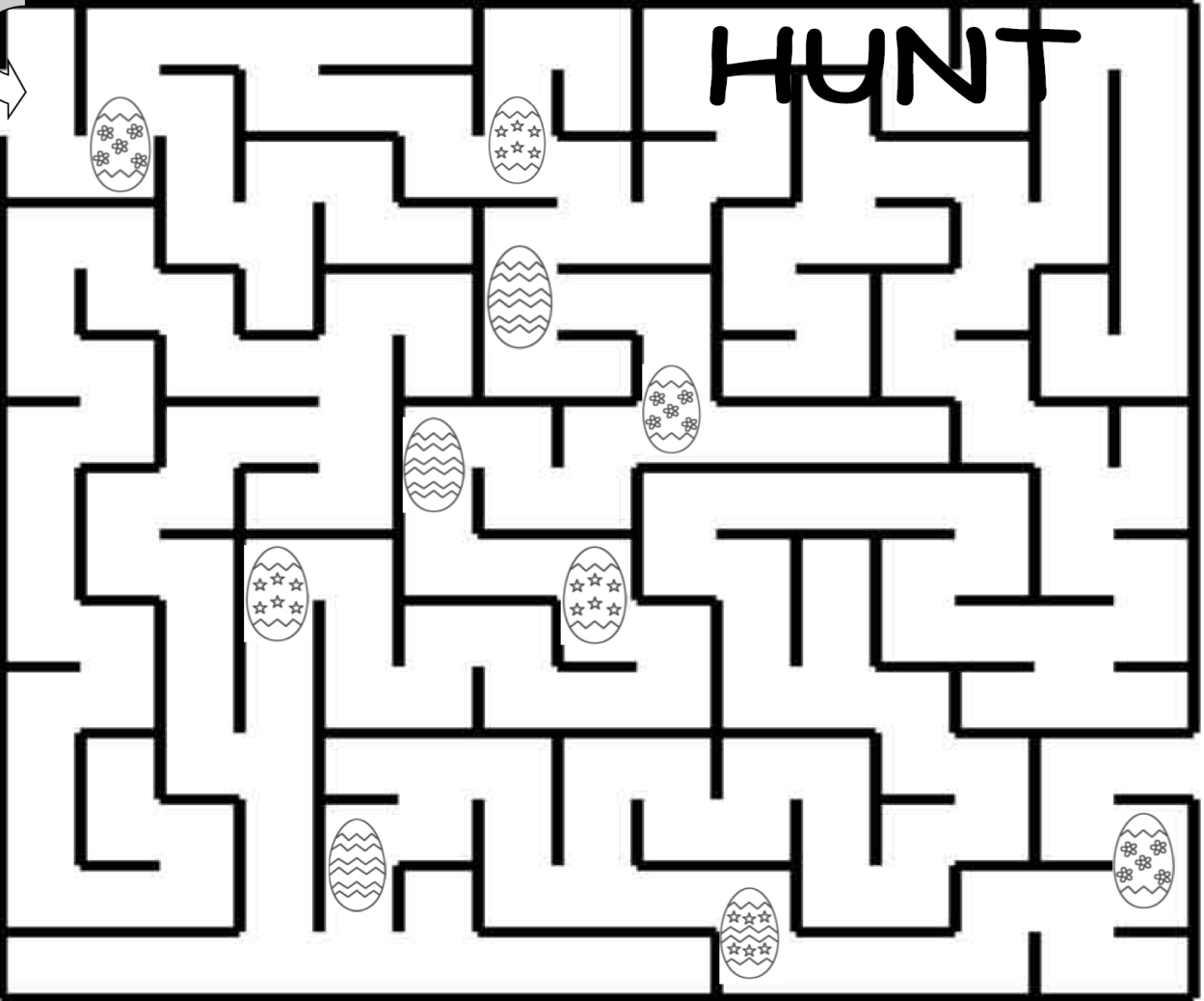
Happy Easter from the ATES  
ESL Team!! Mrs. Acosta, Mrs. Andres, Mrs. Felipe



# EGG



# HUNT



Collect the eggs and colour them:

Egg 1- blue	Egg 6- black
Egg 2- green	Egg 7- yellow
Egg 3- red	Egg 8- white
Egg 4- orange	Egg 9- purple
Egg 5- brown	Egg 10- pink



# COMMUNITY LEARNING CENTER (CLC)

As part of the GDOE's goal to broaden the access to technology for all students, Astumbo Elementary School has been designated as a Community Learning Center. Our CLC will provide students after school accommodations to support distance learning by offering students access to the facilities and equipment as well as access to the internet for educational purposes.

- Sign-up on-site or online: <http://tinyurl.com/aaumg7ez>
- Laptop with internet access (1 Hour depending on number of registrations)
- WiFi Hot Spots-Bring your personal device to access internet
- Printing available (Limited)
- Public, private, and DODEA students are welcome to use the centers
- One parent or 16 year old must accompany the student/students using the laptops


**Schedule:** Every Monday, Tuesday & Friday from 3:30pm-7:00pm

**COVID-19 protocols will be in place for the safety of everyone.**


*"This activity is administered by the Guam Department of Education (GDOE)-Federal Programs Division/Grants Office and funded by the U.S. Department of Education"*




## April is National Child Abuse Prevention Month



**THRIVING**  
**Children and Families:**  
**PREVENTION WITH PURPOSE**  
#ChildAbusePreventionMonth

 Child Welfare  
Information Gateway

 Children's  
Bureau

“National Child Abuse Prevention Month recognizes the importance of communities working together to help families thrive and prevent child maltreatment. During the month of April and throughout the year, communities are encouraged to increase awareness about child and family well-being, and work together to implement effective strategies that support families and prevent child abuse and neglect.”

<https://www.childwelfare.gov/preventionmonth/>